



Highland RIDGE RV

Open Range



Serial #: 58TBM0BP6S15L3115
Model: 26BHS OPEN RANGE TT

Model Year: 2025 Dealer Name: BERRYLAND CAMPERS
42775 PLEASANT RIDGE ROAD
PONCHATOULA, LA 70454
USA

Manufacturer's Suggested Retail Price \$37,006.00

Standard Equipment

Optional Equipment

THE FOLLOWING ITEMS ARE STANDARD ON THIS MODEL

OPTIONAL EQUIPMENT INSTALLED ON THIS VEHICLE
BY MANUFACTURER

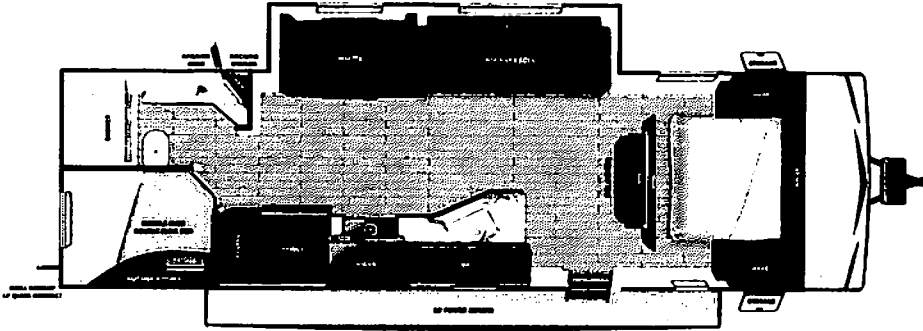
- EXTERIOR**
- 120 GFCI protected receptacle
 - 5/8" main floor decking
 - 96" exterior width
 - Black front diamond plate protection
 - Detachable power cords
 - Exterior docking center (dual axle models)
 - Fiberglass insulation
 - Flexible LP lines
 - Gas-vented wheel wells
 - Grab handle
 - In-frame battery rack
 - Magnetic baggage door catches
 - Magnum Hood™ system
 - PVC roofing membrane (limited lifetime warranty)
 - Rain gutters with molded drip spouts
 - Road camera prep
 - Safety bumper with drain hose corner and end caps
 - Self-adjusting electric brakes and E-Z Lube® axles
 - Thermal Seal-enclosed, insulated, and heated underbody and fully insulated roof with a PVC roofing membrane (dual axle models)
 - Tinted safety-glass windows throughout

- INTERIOR**
- 10 cu. ft. 12V Refrigerator
 - 75 lb. ball bearing drawer guides
 - 81" interior height
 - Ceiling mount Bluetooth® speaker
 - Flush floor slides with residential vinyl flooring (select models)
 - Foot lock toilet
 - Hidden lunge cabinet door hinges
 - LED interior lighting
 - Magnetic cabinet catches
 - Pressed blackout night shades
 - Pocket-screwed lumbercore cabinet construction
 - Pressed membrane kitchen countertops
 - Range hood
 - Residential high-rise kitchen faucet
 - Single basin under-mount kitchen sink
 - Solid hardwood cabinet doors
 - Solid hardwood drawer fronts
 - Storage below main bed
 - USB charging port at beds and bunks
- CUSTOMER CONVENIENCE PACKAGE (Mandatory)**
- 13,500 BTU roof mounted A/C
 - 17" oven (dual axle models)
 - 2-burner range with glass cover (single axle models)
 - 3-burner range with glass cover (dual axle models)
 - Dome style digital TV antenna
 - Friction lunge entrance door with window and shade prep
 - Gas/electric water heater
 - Microwave
 - Nitrogen filled radial tires
 - Powered awning with LED lighting
 - Powered bathroom vent
 - Residential vinyl flooring throughout
 - Solid swing down step (main)
 - Stabilizer jacks (4-dual axle models, 2-single axle models)
 - Water heater bypass
 - Xtend Solar I Package (200 watt solar panel with 30 amp controller)

Base price	33,263.00
USA STANDARDS	n/c
CUSTOMER CONVENIENCE PACKAGE	3,743.00
13,500 BTU AC	n/c
30 AMP SERVICE	n/c
METAL SIDEWALL	n/c
STANDARD RIMS	n/c
JACK KNIFE SOFA	n/c

UNIT TOTAL **37,006.00**

DEALER INSTALLED OPTIONS



UVW
6020 lbs



Sleeps



Length
30' 8.38"

DIMENSIONS

Exterior height:.....131.75"
Exterior width:.....96.00"

WEIGHTS

GVWR:.....7995
GAWR (front):.....3500
GAWR (rear):.....3500
Approx. Gross Cargo Carrying Capacity(GCCC):.....1975

TIRES

Tire size (front):.....ST205/75R14D
Tire size (mid):.....
Tire size (rear):.....ST205/75R14D

CAPACITIES

Fresh water tank (gals.):...42.00
Gray water tank (gals.):...32.50
Black water/toilet tank (gals.):...32.50
Propane (lbs.):...60
Propane (gals.):...14
Water heater (gals.):...6.00

SEATING & SLEEPING

Some dimensions may be rounded and may vary from the actual dimensions
Weights may be estimated calculations and may vary from the actual weight - refer to the vehicle weight labels for actual weights
Floorplans, features and specifications are subject to change without notice.

