



Highland RIDGE RV

Open Range



Serial #: 58TCH0BV0M3BF3121
Model: 376FBH OPEN RANGE FW

Model Year: 2021 Dealer Name: BERRYLAND CAMPERS
42775 PLEASANT RIDGE ROAD
PONCHATOULA, LA 70454
USA

Manufacturer's Suggested Retail Price \$87,994.00

TOTAL AMOUNT DOES NOT INCLUDE STATE AND LOCAL TAXES OR LICENSE FEES. THE PRICE SHOWN ABOVE MAY OR MAY NOT BE REPRESENTATIVE OF THE ACTUAL SELLING PRICE OF SIMILAR RECREATIONAL VEHICLES IN YOUR AREA.

Standard Equipment

Optional Equipment

THE FOLLOWING ITEMS ARE STANDARD ON THIS MODEL AT NO EXTRA CHARGE

OPTIONAL EQUIPMENT INSTALLED ON THIS VEHICLE BY MANUFACTURER

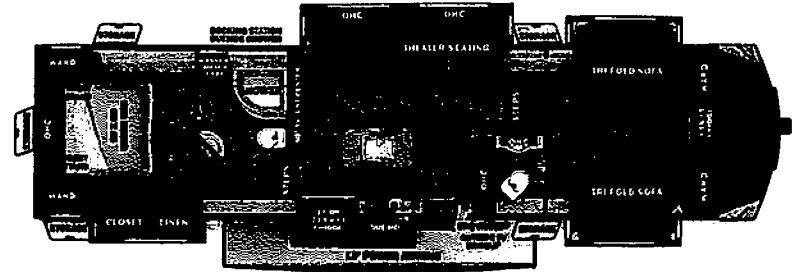
- Exterior**
- 2" Recovery Hitch
 - 3-20lb LP Bottles
 - 50 Amp Service
 - ADCU-SLIDE™ Side System (42" Deep 4-Corner Compression)
 - Self-Adjusting Electric Brakes
 - Battery Disconnect Switch
 - Brass Hanger Bushings with Wet Boots
 - Equal-Flex® Axle Suspension
 - Frameless Windows
 - Laminated Black Foam Floor
 - Level-Loc™ - 4 or 6 Point Automatic Leveling with JT's Strong Arms®
 - PVC Roofing Membrane (15 Year Limited Warranty/Non-Prorated)
 - Roof Ladder
 - Spare Tire
- Executive Package**
- 13,500 BTU A/C with Quiet Residential Return Air - Bedroom
 - 15,000 BTU A/C with Quiet Residential Return Air - Main Living
 - 70" X 20" Entrance Door with Euro Latch & Swing
 - Shed Screen Door
 - Cutting Board & Sink Strainer
 - Digital TV Antenna
 - Interior Conference Center Light
 - Keyed-Access Entry & Baggage Doors
 - LED HDTV
 - Motion Sensor Lighting in Bedroom & Hallway
 - Painted Fiberglass Front Cap with LED Lights
 - Power Awning with LED Lighting, FLKguard®
 - Speakers & Bluetooth Control
 - Quick Recovery Gas/Electric Water Heater
 - Quick Release Fresh Water Drain
 - RidgeLock™ - Bluetooth Control of Slides & Lighting
 - Solar Prep
 - Solid Surface Countertops in Kitchen
 - Solid Swing Down Entry Step
 - Soundbar in Living Area
 - Stainless Steel Appliances
 - Stainless Steel Under-Mount Sink with High-Rise Faucet
 - USB/12V Charging Port

- Interior**
- 75lb Ball Bearing Drawer Guides
 - 80" Queen Bed
 - Cable & Satellite Prep
 - Day & Night Roller Shades
 - Flush Floor Slides with Residential Vinyl Flooring
 - Glass Shower Door
 - Hardwood Valances
 - Hardwood Ceiling Slat
 - Hardwood Crown Molding
 - Hardwood Sideload Fascia
 - Large Freestanding Oven & 4-Burner Range
 - LED Lighting in Ceiling
 - Observation Camera Prep
 - One-Piece Fiberglass Shower
 - Raised Panel Hardwood Cabinet Doors
 - Residential Convection Microwave
 - Table & Chairs
 - Theater Seating with Heat & Massage
 - USB Ports in Master Bedroom
 - Wall Controlled Power Vent (Kitchen/Living Room Area)
 - Washer/Dryer Prep
 - WIFI Ready
- Four Season Package**
- Double Insulated Baggage Doors
 - Ducted Heat to Underbody with Cold Air Return
 - Enclosed Cable Operated Gate Valves
 - Enclosed Outside Docking Station with Black Tank Flush
 - Heated & Enclosed Underbody
 - High Performance Furnace
 - R-33 Reflective Foil Insulation Ceiling & Underbody
 - R-9 Insulation in Sidewalls

Base price	77,373.00
USA Standards	n/c
Executive Package	6,000.00
Four Seasons Protection Package	750.00
RVIA	135.00
No Heat Pump	n/c
21 Cu. Ft. Refrigerator	2,393.00
No Generator Prep	n/c
No Bedroom TV	n/c
Windows Standard	n/c
Power Fan Vent Wall Control (Living Room)	
Power Fan Vent Wall Control (Bathroom)	375.00
No Pin Box	n/c
U-Lounge Sofa	593.00

UNIT TOTAL **87,994.00**

DEALER INSTALLED OPTIONS



UVW
12711 lbs



Sleeps
Up to 8



Length
42' 2.38"

DIMENSIONS

Exterior height:	157.50"
Exterior width:	100.00"
WEIGHTS	
GVWR:	15000
GAWR (front):	7000
GAWR (rear):	7000
Approx. Gross Cargo Carrying Capacity (GCCC):	2289

CAPACITIES

Fresh water tank (gals.):	75.00
Gray water tank (gals.):	82.00
Black water/toilet tank (gals.):	82.00
Propane (lbs.):	60
Propane (gals.):	14
Water heater (gals.):	10.00

TIRES

Tire size (front):	ST235/85R16P
Tire size (mid):	
Tire size (rear):	ST235/85R16P

SEATING & SLEEPING

Queen Bed: 60 X 80

Some dimensions may be rounded and may vary from the actual dimensions
Weights may be estimated calculations and may vary from the actual weight - refer to the vehicle weight labels for actual weights
Floorplans, features and specifications are subject to change without notice.

