

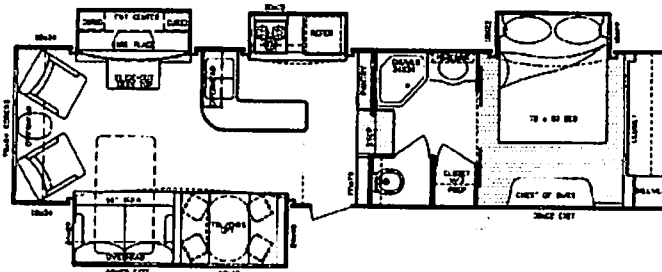
★  
**OPEN RANGE**  
**MSRP PRICE SHEET**

2009 Fifth Wheel  
**385RLS**  
 Effective Date: 7/01/2008

Dealer Name: BERRYLAND CAMPERS  
 VIN #: SXMF382795000911

**DÉCOR OPTIONS:**

- Haversham (Blue/Brown)
- Lifelong (Green)
- Sheridan (Neutral/Tan)



**385RLS**

**OPTIONAL FEATURES**

	Price	Description
X	\$413	Wire and Frame for 2nd A/C (Mandatory) (Includes 50 Amp Service)
X	\$770	2nd A/C 15,000 BTU, Ducted
	\$0	Dinette Booth IPO Free Standing Table & Chairs
	\$1,113	Dual Pane Windows
	\$693	Generator Prep (Grill n/a w/Gen. Prep.)
X	\$413	16" Aluminum Wheels & Tires (Mandatory)
X	\$308	Power Rear Stabilizer Jacks
X	\$140	Rear Ladder
	\$350	Additional Fantastic Fan in Bedroom
X	\$693	Fireplace (337, 385, 391 only)
X	\$413	Central Vacuum

	Price	Description
X	\$273	Dual LP with Slide Trays (80lb capacity)
X	\$700	Four Seasons Protection Package (Mandatory)
X	\$2,100	Entertainment Package (Mandatory)
X	\$3,500	Executive Living Package (Mandatory)
X	\$693	Rear Fiberglass Cap
	\$175	Bike Receiver
	\$189	Bike Carrier
X	\$91	RVIA
	\$273	Q.A.I. Construction (Canadian Dealers ONLY)
	\$91	Go RVing MEP Fee (Canada)

**Four Seasons Protection Package:** Atwood High Performance Furnace, Double Insulated Baggage Doors, Heated Storage Area, Heated Underbelly, Insulated Slide-Floor, Heated & Enclosed Dump Valves, Vented Attic, Remote Digital Thermostat, R-9 Walls, R-21 Floor, up to R-28 Ceiling.

**Entertainment Package:** 42" LCD TV, 19" LCD TV w/Portable Swing Arm, DVD/CD/MP3/AM/FM Player w/ Surround Sound Speaker, Dual Speaker in Pass-Through Storage Area, TV Antenna and booster.

BASE PRICE:	<u>\$46,935.00</u>
OPTIONS:	<u>\$10,507.00</u>
DESTINATION CHG:	<u>\$992.00</u>
FUEL SURCHARGE:	<u>\$417.00</u>
<b>TOTAL:</b>	<b>\$58,851.00</b>

\*\*Fuel surcharge to fluctuate with current fuel prices and may reflect an increase or decrease accordingly

**Executive Living Package:** INTERIOR OPTIONS - Large 8 Cubic Ft. Refer, 10 Gal. Quick Recovery Water Heater, 15,000 BTU A/C, Corian Counter Tops in Galley, "Fantastic Fan", Residential Hide-a-bed Sofa, "Posterest" Pillowtop Residential Mattress, Wine Rack, Pull-Out Pantry. EXTERIOR OPTIONS - Power Awning, "MaxxAir" Vent Cover, King-Pin Stabilizer, 16" Aluminum 8-Lug Wheels.

**Standard Features:** INTERIOR -High Output Range w/Ignitor and Large 22" Oven. HUD Approved Luan Wall Board, Maple Hardwood Raised Panel Glazed Cabinet Doors, Full Extension Drawer Guides, Fluorescent Light in Galley, Pull-Out Waste Basket, Portable Laundry Basket, Washer/Dryer Prep, Glass Shower Door & Surround, Sky Light above Shower, Cable Hook-up, Satellite Prep, Glass Vessel Lavatory Bowl Sink with Single Lever Lavatory Faucet, Porcelain Toilet, Motion Detector Night Light. EXTERIOR - Coutoured Front Cap for Superior Turning Radius, Exterior Utility Center w/Black Tank Flush, Battery Disconnect, "Dexter" Wide Stance E-Z Lube Axles, Equa Flex Suspension, Radial Tires, Wide Stance Front Electric Jacks, Rear Stabilizer Jacks, Large Triple 9" Entry Steps, Dual Outdoor Security Lights, Extended Gutter Spouts, Large Stainless Steel Assist Grab Handle.

\*\*\* Prices, features and options are subject to change without notice.