

★  
**OPEN RANGE**  
 Journeyer

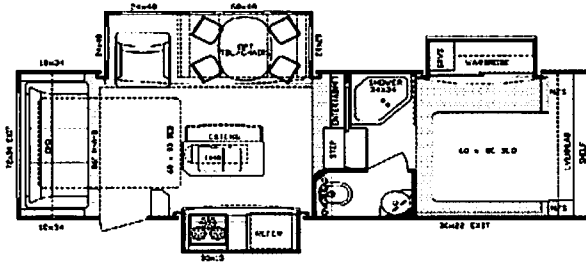
2009 Fifth Wheel  
 JF280RLS  
 Effective Date: 8/05/2008

# MSRP PRICE SHEET

**Dealer Name:** BERRYLAND CAMPERS  
**VIN #** 5XMFJ282595000749

**DÉCOR OPTIONS:**

- Haversham (Blue/Brown)
- Lifelong (Green)
- Sheridan (Neutral/Tan)



**OPTIONAL FEATURES**

		Description
X	\$413	Wire and Frame for 2nd A/C (Mandatory) (Includes 50 Amp Service)
X	\$651	2nd A/C, 13,500 BTU Non-Ducted
	\$476	Free Standing Table & Chairs IPO Dinette Booth
	\$1,113	Dual Pane Windows
X	\$735	16" Aluminum Wheels & Tires
	\$308	Power Rear Stabilizer Jacks
	\$210	King Pin Stabilizer Jack
X	\$140	Rear Ladder
	\$350	Fantastic Fan in: Bedroom / Bathroom / Kitchen

		Description
X	\$273	Dual LP with Slide Trays (80lb capacity)
	\$266	One Recliner IPO Swivel Rocker
	\$693	19" Flat Screen Bedroom TV
X	\$700	Four Seasons Protection Package (Mandatory)
X	\$1,400	Entertainment Package (Mandatory)
X	\$2,800	Executive Living Package (Mandatory)
X	\$91	RVIA
	\$273	Q.A.I. Construction (Canadian Dealers ONLY)
	\$91	Go RVing MEP Fee (Canada)
X	\$889	Sidewinder Hitch

**Four Seasons Protection Package:** Atwood High Performance Furnace, Double Insulated Baggage Doors, Heated Storage Area, Heated Underbelly, Insulated Slide-Floor, Heated & Enclosed Dump Valves, Vented Attic, Remote Digital Thermostat, R-9 Walls, R-21 Floor, up to R-28 Ceiling.

**Entertainment Package:** 26" LCD TV, DVD/CD/MP3/AM/FM Player w/ Surround Sound Speaker, Dual Speaker in Pass-Through Storage Area, TV Antenna and booster.

<b>BASE PRICE:</b>	<u>\$35,735.00</u>
<b>OPTIONS:</b>	<u>\$8,092.00</u>
<b>DESTINATION CHG:</b>	<u>\$992.00</u>
<b>FUEL SURCHARGE**:</b>	<u>\$553.00</u>
<b>TOTAL:</b>	<b>\$45,372.00</b>

\*\*Fuel surcharge to fluctuate with current fuel prices and may reflect an increase or decrease accordingly.

**Executive Living Package:** INTERIOR OPTIONS - Large 8 Cubic Ft. Refer, 10 Gal. Quick Recovery Water Heater, 15,000 BTU A/C, Residential Hide-a-bed Sofa, Residential Mattress, Spice Rack, Pull-Out Pantry. EXTERIOR OPTIONS - Power Awning, "MaxxAir" Vent Cover, 15" Steel 6-Lug Wheels.

**Standard Features:** INTERIOR -High Output Range w/ignitor and Large 22" Oven. HUD Approved Luan Wall Board, Maple Hardwood Raised Panel Glazed Cabinet Doors, Full Extension Drawer Guides, Fluorescent Light in Galley, Pull-Out Waste Basket, Portable Laundry Basket, Glass Shower Door & Surround, Sky Light above Shower, Cable Hook-up, Satellite Prep, Large Lavatory Bowl Sink, Porcelain Toilet, Motion Detector Night Light. EXTERIOR - Exterior Utility Center w/Black Tank Flush, Battery Disconnect, "Dexter" Wide Stance E-2 Lube Axles, Equa Flex Suspension, Radial Tires, Front and Rear Stabilizer Jacks, Large Triple 9" Entry Steps, Dual Outdoor Security Lights, Extended Gutter Spouts, Large Stainless Steel Assist Grab Handle, Boat Hitch Factory Installed.

\*\*\* Prices, features and options are subject to change without notice.